

1. National Picture

National Crime and Policing Measures

Target	Measure	12 months to Sept 2020	12 months to Sept 2022	Change
Reduce Murder/Homicide	Recorded Homicides	21	20	-4.8%
Reduce Serious violence	Firearms Offences (includes all uses however excludes air weapons and bb guns)	44 [^]	78 [^]	+77%
	Discharges of Lethal Barrelled Firearms (handguns, shotguns and rifles - not air)	6 [^]	8 [^]	+33%
	Presentations to ED with knife/sharp object assault injuries	108 [*]	97 [*]	-10.2%
Reduce Neighbourhood Crime	Recorded Burglary, Robbery, Theft of/from vehicle, Theft from person	17,539	16,284	-7.2%
Improve satisfaction among victims (focus on DA)	% Victims Satisfied (internal surveys)	70.0%	70.5%	+0.5%
	% DA Victims Satisfied (internal surveys)	85.7%	85.0%	-0.7%
Tackle Cyber Crime	Recorded Online/Cyber-enabled crimes	5,841	6,216	+6.4%

[^] Data 12 months to end of June 2020 and June 2022 as July/August/September Data isn't yet available

^{*}Data 12 months to end of August 2020 and August 2022 as September Data isn't yet available

Key Headlines

- **Use of Weapons:** Discharges of lethal, barreled weapons remain static in trend and low in number, with 3 recorded in the last quarter. There has been an increase in overall police recorded firearms offences, however analysis has confirmed this is entirely driven by threats with weapons, rather than their active use. A Constabulary Intelligence Analyst has recently completed a problem profile, which confirms no fatal injuries using firearms in the last year, no firearms thefts in that period and 9 recovered firearms. Five of nine unlawful discharges were related to drugs/OCG disputes.
- **Homicide:** There have been four homicides recorded since July. Arrests have been made in all cases, and 5 individuals charged and remanded . The latest National data shows an upward trend.). This likely indicates a return to expected levels after a considerable dip during the pandemic.
- **Drugs Offences:** National data shows an increase in Police Recorded Drugs Offences in Lancashire, when the year to July is compared against a pre-pandemic baseline. However, this is in line with National trends and is likely driven through proactive work, including Operation Vanquish.
- **Victim Satisfaction:** Levels for DA victims and Overall victims remain circa 85% and 71% respectively.
- **Cyber crime** – Internal measures indicate a continued increase.

National CJS Delivery Data

Data was updated in August 2022 to include Quarter 1 of 2022 (January to March).

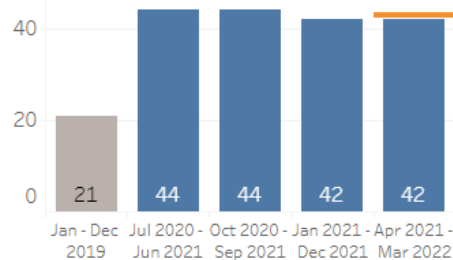
Key Headlines

All Crime

- The latest national data suggests **no change in the timeliness of investigations for victims of crime overall**. Lancashire is also in line with the national trend. Timeliness from police referral to CPS charge for the North-West CPS area is also below the National average and static in trend (-6 ppts; 36 days). However, continued increases are apparent in the HMCTS data when assessing time from arrival in Crown Court to case completion. The latter figure is also 4 ppts above the National average (at 241 days).

Median days from offence recorded to the police charging an offender for offences where there is a specific individual victim - Lancashire

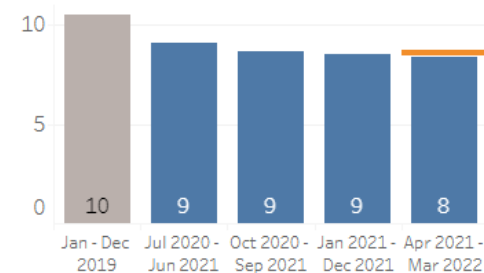
no change from Jan 2021 - Dec 2021



Orange line = National value.

Percentage of police-recorded offences where the offender is issued with a successful outcome for offences where there are specific individual victims - Lancashire

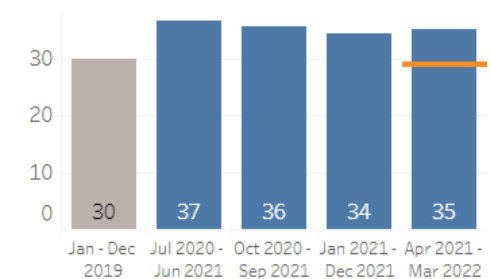
no change from Jan 2021 - Dec 2021



Orange line = National value.

Percentage of police investigations closed because the victim does not support further police action - Lancashire

↑1 ppt from Jan 2021 - Dec 2021



Orange line = National value.

Rolling 12 month comparisons for Lancashire and National Average – (orange line) – All Crime

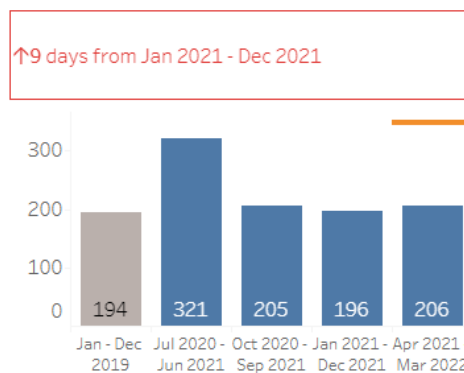
Source: [Criminal Justice System Delivery Data Dashboard - GOV.UK](https://www.gov.uk/government/collections/criminal-justice-system-delivery-data)

- The **percentage of positive outcomes for victim-based crime has also shown little change** and is again reflective of the National average – (based on this 12-month rolling average to the end of March 2022 only). Data indicates a very **slight increase in the percentage of investigations closed because the victim does not support further police action** and Lancashire's figure is above the National average (by 6 percentage points).

Adult Rape

- Lancashire is **ahead of the National average in relation to investigative timeliness and positive outcomes** for adult victims of rape. The North West CPS area is also ahead of the National picture in relation to the time taken to authorise a charge following police referral. However the Lancashire HMCTS data indicates that the time from a case arriving at Crown Court to it being completed, is both increasing, and above the National average (+17 ppts at 390 days).

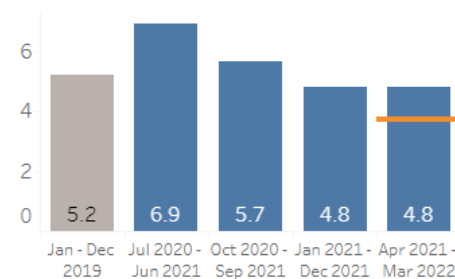
Median days from offence recorded to the police charging an offender - Lancashire



Orange line = National value.

Percentage of cases which resulted in a charge (out of all adult rape cases with any outcome assigned) - Lancashire

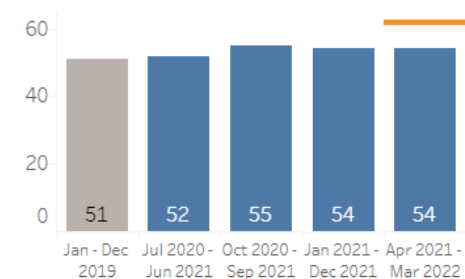
no change from Jan 2021 - Dec 2021



Orange line = National value.

Percentage of police investigations closed because the victim does not support further police action - Lancashire

no change from Jan 2021 - Dec 2021



Orange line = National value.

Rolling 12 month comparisons for Lancashire and National Average – (orange line) – Adult Rape

Source: [Criminal Justice System Delivery Data Dashboard - GOV.UK](https://www.gov.uk/government/collections/criminal-justice-system-delivery-data)

- Lancashire also closed a smaller percentage of investigations due to the victim not supporting police action (8 ppts lower than the National average).

2. Recorded Crime and Outcome Levels

Year-to-Date comparison – All Crime

1 st April – 30 th September	All crime total	Percentage change vs. previous year
2019	74,435	-
2020	61,164	-18%
2021	69,554	+14%
2022	70,090	+0.8%

- Overall, crime levels are marginally higher in the year-to-date than 2021, but remain below the 2019 pre-pandemic period.

Outcomes – Priority Crimes

- The latest available national data (year to end of August 2022) shows the Constabulary continues to achieve greater proportions of positive outcomes than the North-West Regional and National averages across almost all priority crime types.

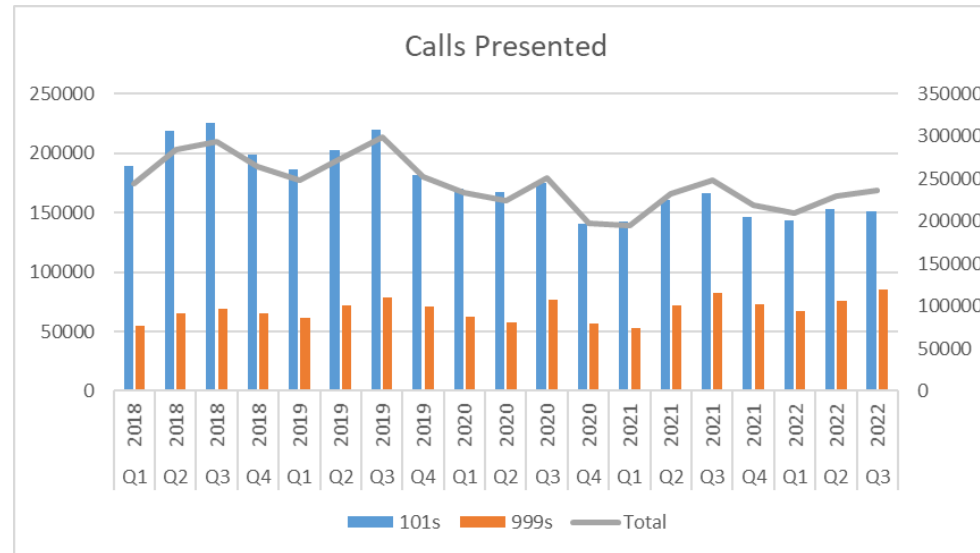
Police and Crime Plan Priorities

3. Efficient and Effective policing

Contact Management update

Key Headlines

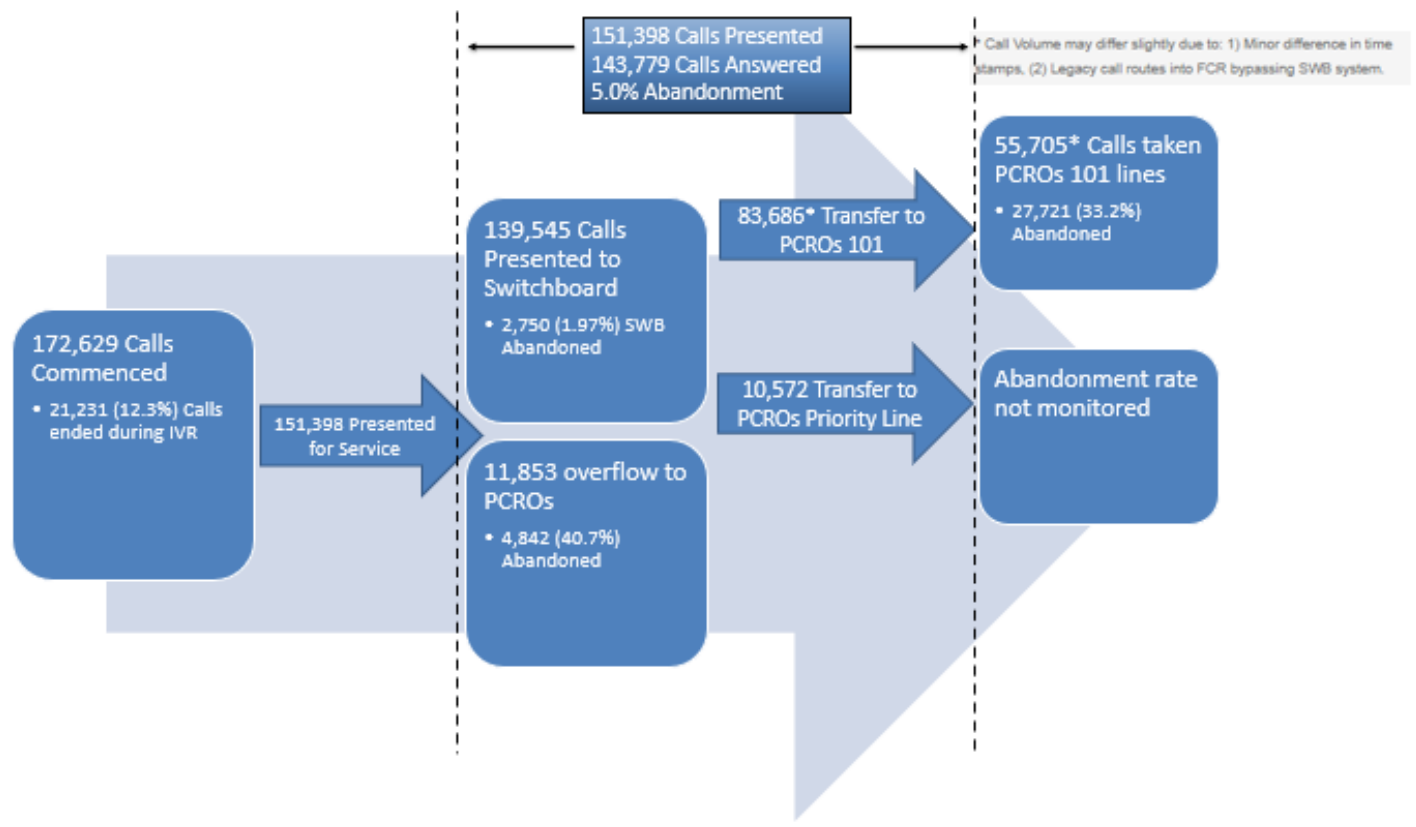
- The overall number of calls presented has increased throughout 2022 and the **latest quarter recorded the highest volume of 999 calls** in currently available data. The figure (85,170) was 3000 calls higher than the same quarter in 2021. August's figure was also the highest monthly volume of 999 calls since 2011, at 30,132 calls. In contrast, 101 calls have gradually decreased in volume across the long-term, although there is evidence of channel shift to the digital desk. Digital contact via email or the Public Engagement portal peaked in 2021 and is currently tracking at levels very similar to 2019 (for the calendar year to date = 79k contacts).



Call volumes per month 2018 – present (total refers to right axis)

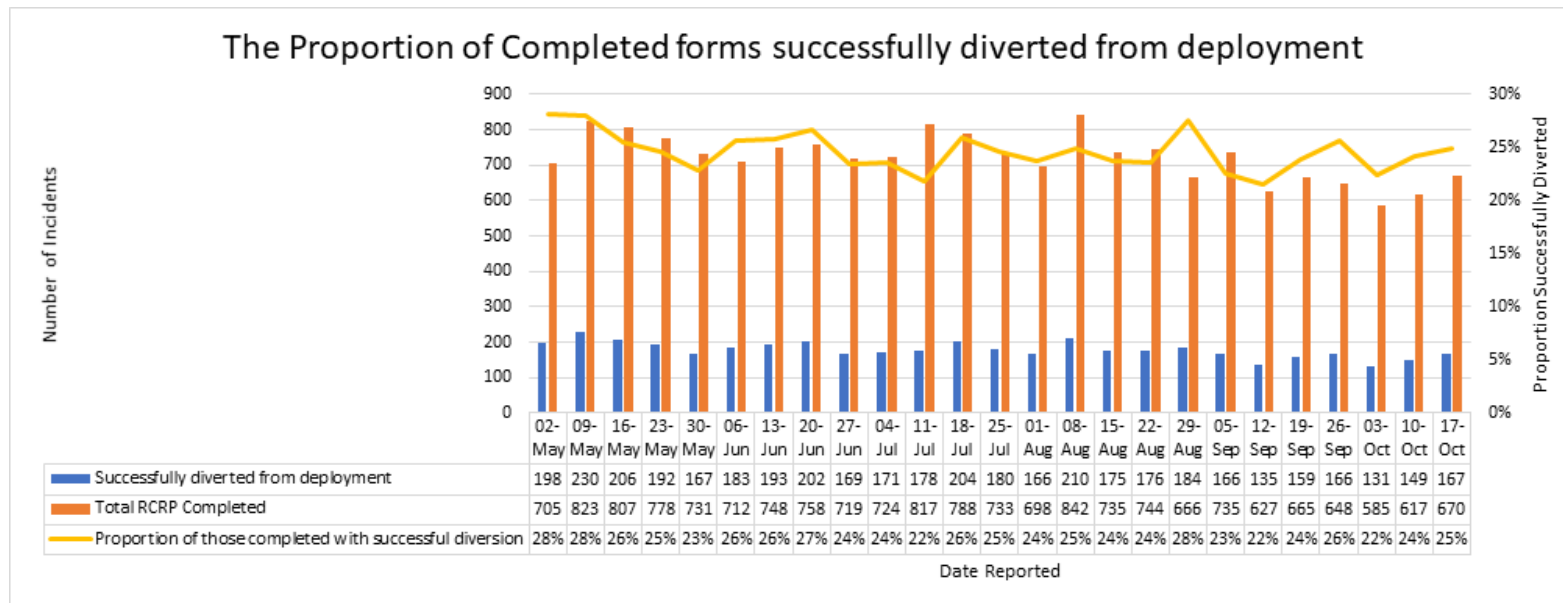
Source: FCR Live Dashboard

- 101 abandonment rates:** The switchboard abandonment rate (calls abandoned after presentation to the switchboard during operating hours) was 2% during the last quarter, a slight reduction from nearer 3% in June. The combined abandonment rate, which includes all hours (during switchboard operation and overnight, when Call Operators take 101 calls instead was 5.0%, a reduction of 0.3% since the last update.



101 Call Flow Performance – July to September 2022
 Source: FCR Live dashboard, Power BI

- **999 Service Levels** started to reduce in quarter 2 during a period of peak leave, abstraction and sickness, alongside reduced resourcing levels. With the additional impact of increased call volumes in the FCR over the last few months, service levels have further reduced, averaging at 58% during the latest quarter. This has already improved in October, tracking at 67% at the time of writing. Abandonment jumped up in August to 3.5%, but quickly reduced again in September to 1.2%.
- **Digital Desk Performance has been maintained.** As per the last update, performance levels continue to meet targets.
- The Right Care, Right Person approach has been applied to between 75 and 80% of all concern for welfare incidents across the last quarter. Data indicates that in approximately a quarter of cases, deployment has been deemed unnecessary, therefore reducing resource impact through effective engagement with partners.



4. Getting Tough on Anti-Social Behaviour (ASB)

Key Headlines

- **Reductions have continued**, with figures tracking 22% below the previous financial year to date (see below). Volumes in the last quarter closely mirror those in June-September 2019. A slight increase was observed in the month of August, as would be expected, following seasonal trends. Across the last quarter, moto nuisance continued to be an issue at multiple locations and fast-food restaurants across the County reported issues with beggars, youths and unruly customers.

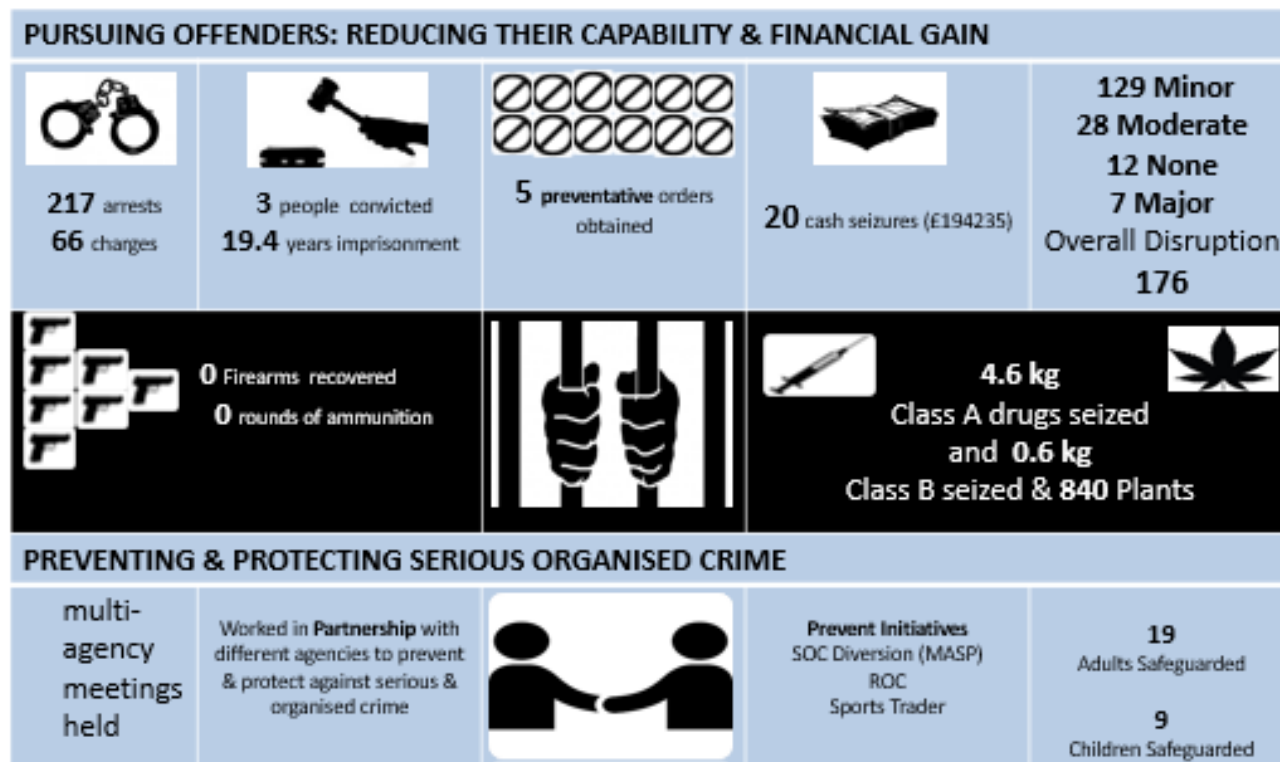
1st April – 30th September	ASB Incident total	Percentage change vs. previous year
2019	30,401	-
2020	52,330	+72%
2021	39,751	-24%
2022	30,957	-22%

ASB Incidents Recorded – Lancashire, 2018/19 to present

Source: Responding Dashboard

- LANPAC bids to support crime prevention activity increased over the last period by 86% - this is following a concerted effort to promote available funds. Through partner support, the Constabulary's Prevention and Problem-Solving Command have scheduled a meeting with an external marketing company to review how LANPAC is promoted further afield.
- A survey of Special Constabulary staff has informed an action plan for the next 12-months. Feedback included requests for more specialist training. This resulted in implementation of a dedicated Safer Roads Team, Special Constabulary Rural & Wildlife Officers, and an increase in the use of Specials at Football Matches and events. In March 2023, several places have been secured on an initial Level 2 Public Order course, a first for Lancashire, which will increase capability and resilience. In the last quarter Special Constabulary colleagues have volunteered over 9,500 hours.
- On the 28th September, the first 'Heritage Crime Conference' took place at Salmesbury Hall, led by the Constabulary's Rural Crime Coordinator. This was the first of its kind in Lancashire, and one of the first of its kind nationally. Over 120 delegates attended throughout the day.

5. Disrupting and Dismantling Organised Crime



Data for July – September; Source: PAM system

Key Headlines

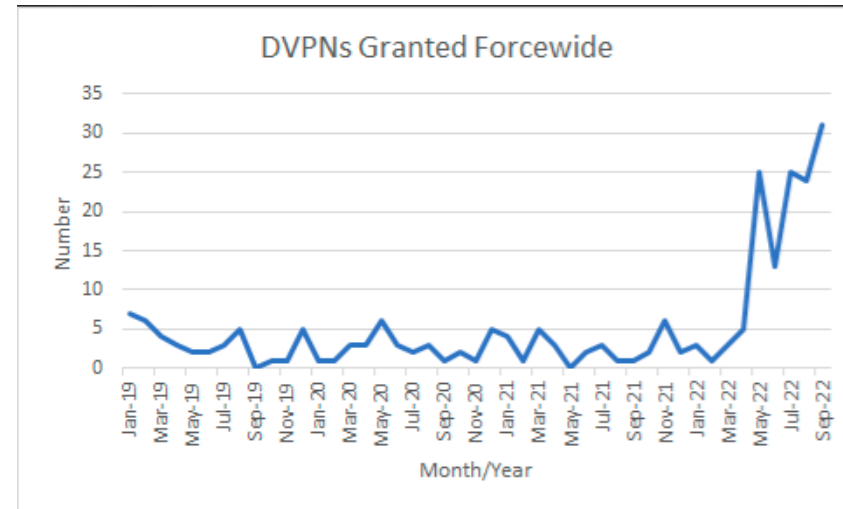
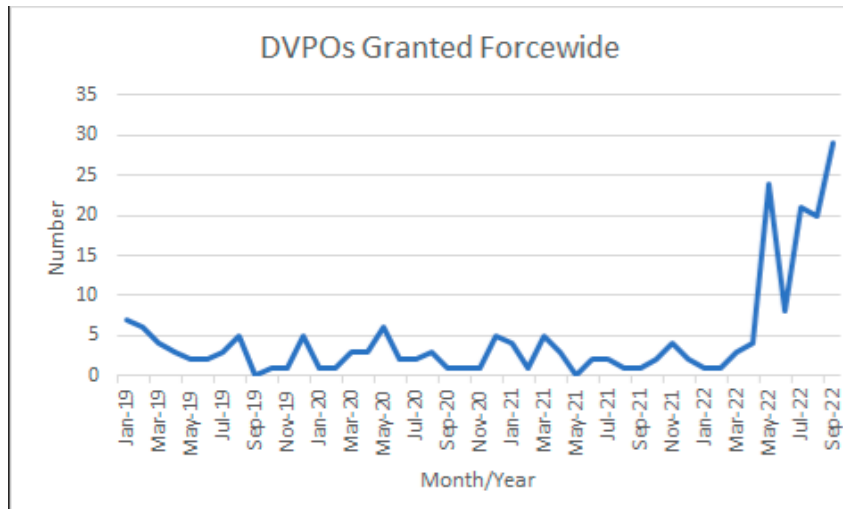
- Op Aident ran during September (targeting exploitation & modern slavery). This resulted in multiple arrests/charges and vulnerable individuals were safeguarded.
- In relation to Op Venetic, a principal nominal was sentenced to 15 years for conspiracy to supply class A drugs.
- Arrests have been made across all of the following threat areas: asset denial, county lines, drugs, money laundering, modern day slavery and organised acquisitive crime.

6. Tackling Domestic Abuse (DA) and Sexual Violence

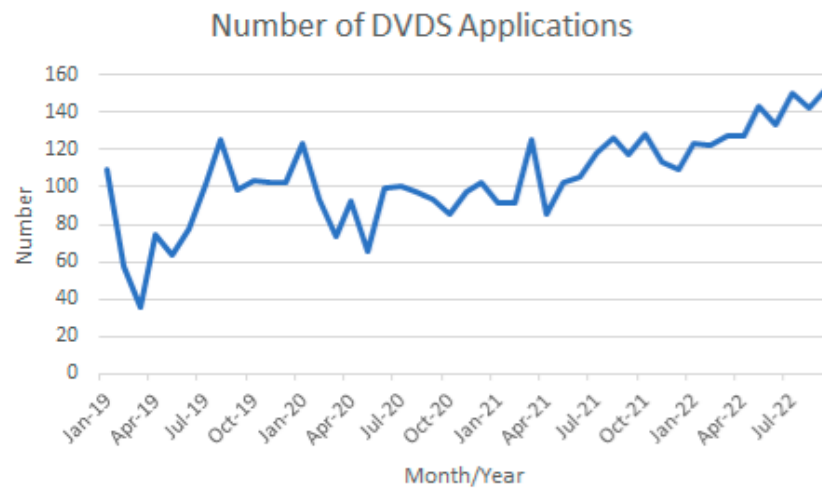
1st April – 30th September	DA Crime total	Percentage change vs. previous year
2019	10,918	-
2020	11,896	+9%
2021	13,311	+12%
2022	12,893	-3%

Key Headlines

- **DA incidents are tracking at a very similar level to last year, and the rate of increase of DA crimes continues to level off.** The recorded DA crime trend has flattened during 2022, after a steady but continual increase between 2019 and 2021. DA offences have seen a year-to-date reduction of 3%. Domestic Violence with Injury offences peaked in July but have decreased in both August and September, in line with expected seasonality. DA sexual Offences also followed this trend and almost halved in volume between July and September.
- The proportion of **DA victims satisfied with the police service they received is stable** – this remains at 85% for the last 12 months.
- Recorded Rape offences have decreased considerably, most likely due to training and a new process to increase scrutiny around crime recording integrity. However, Sexual Offences have continued on an upward trend overall since January 2021. A recent scoping report by the Constabulary’s Public Protection Unit confirmed the impact of social media and increases in third party reporting. In the first 6 months of 2022, almost 30% of reports were from third parties, which is 10% higher than in 2019.
- Lancashire’s VAWG Problem Profile was submitted in early September. The Constabulary awaits feedback and the identification of National themes from the Central Project team. The Constabulary’s dedicated VAWG DI has joined a National Working group around technology-enabled abuse in DA, Stalking and Harassment, which seeks to identify opportunities for enhanced training and awareness. A number of engagement opportunities with black and minoritised women have also proved valuable and relationships with other agencies including the third sector will seek to build on this foundation. The views of individuals with lived experience will inform an action plan for improved practice across the partnership landscape.



- Increases in the use of protective and preventative orders have continued (see above), as have the increases in applications to the DVDS (Clare’s Law). Close scrutiny of both continues.



7. Cracking Down on Burglary and Robbery

Key Headlines

- Almost all Burglary and Robbery offences have increased compared with the previous financial year to date (April -September 2022) – Personal Robbery slight decrease. However, all also remain at a lower volume than the same period in 2019/20. Personal Robbery volumes in the last quarter have been similar to Q4 2019. All Districts are showing an increase for offences of Burglary – Business and Community compared with last year, apart from Blackburn with Darwen and Rossendale.

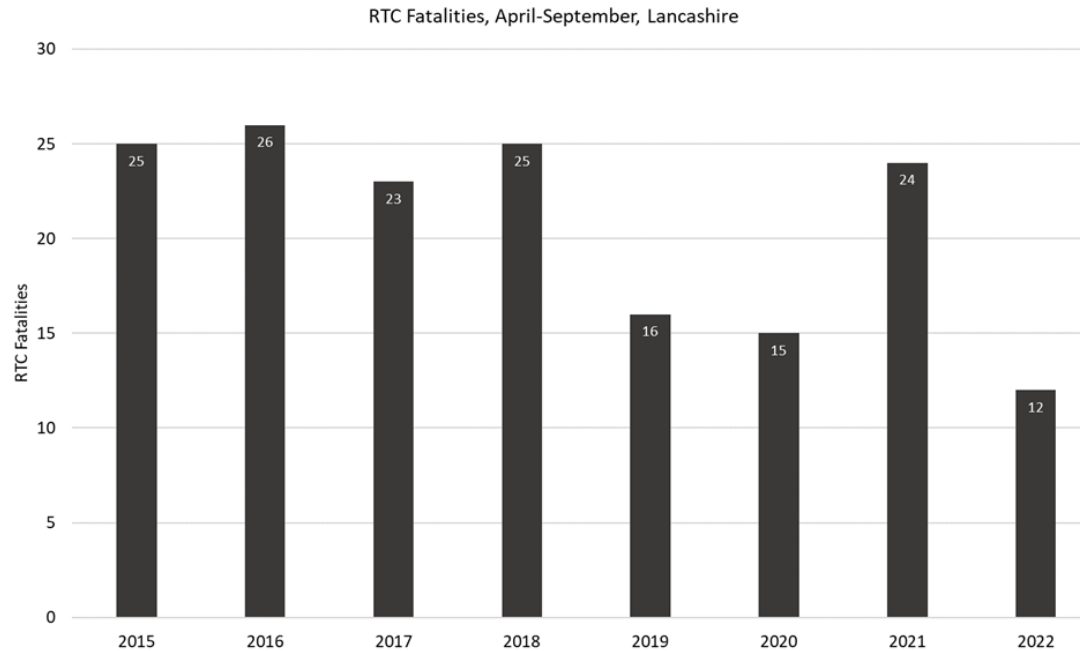
1st April – 30th September	Burglary Business and Community Crime total	Percentage change vs. previous year
2019	2,106	-
2020	1,388	-34%
2021	1,230	-11%
2022	1,416	+15%
1st April – 30th September	Burglary Residential Crime total	Percentage change vs. previous year
2019	3,844	-
2020	2,811	-27%
2021	2,338	-17%
2022	2,497	+7%
1st April – 30th September	Robbery Personal Crime total	Percentage change vs. previous year
2019	639	-
2020	457	-28%
2021	509	+11%
2022	502	-1%

1st April – 30th September	Robbery Business Crime total	Percentage change vs. previous year
2019	45	-
2020	25	-44%
2021	29	+16%
2022	37	+28%

- Residential Burglary outcomes increased throughout the last quarter to 8.9% in September – the highest monthly figure in a year. Burglary (Business and Community) outcomes are tracking higher in the calendar year to date than in any year since 2017 (10.83%).
- In the last quarter, the percentage of burglary victims satisfied with police actions and updates has increased (+3%) and the mean satisfaction score has increased to 5.5 (where 1 is completely dissatisfied and 7 is completely satisfied).
- Operation Defender was launched externally across Lancashire. This follows an internal launch in August and includes the printing of 500 crime prevention leaflets and purchase of crime prevention (Radio-frequency blocking card wallets and SelectaDNA kits) and awareness-raising merchandise, funded by the PCC, which has been distributed across Neighbourhood Policing Teams.
- Optimal Forager has been extended and has now gone live across every division. A weekly briefing report identifies areas at increased risk of Near Repeat Victimisation for residential burglary, which are prioritised for high visibility patrols. This increases the chance of identifying likely offenders and acts as a deterrent, through the presence of a capable guardian.

8. Targeting Dangerous Drivers

Key Headlines



- When compared to 2019 – a solid baseline due to the year being the first year of using CRASH and the last full year without COVID-affected road incidents and traffic flows – **casualties of road traffic collisions in Lancashire have reduced by 10.5%** (equating to 226 fewer RTC casualties within the first half of the 2022 fiscal year).
- However, there has been a **relative stagnation in KSI casualties** with a 1.4% reduction; 566 KSI casualties in 2019; 558 in 2022.

- **Road deaths in Lancashire are currently tracking at the lowest ever count at the half-year point**, with 12 being recorded during the April-September period. When contrasted to 2021, a statistically significant 50% reduction in road deaths is evident. However, 5 fatalities have unfortunately occurred in just 11 days during October.
- **Op Snap** – Since October 2021, there have been 2,204 dashcam submissions from the public and 58% have been actionable. A video montage featuring submitted incidents and final outcomes was published at the end of July 2022 and generated a considerable increase in submissions.
- **Operation Virage** is an intelligence led operation which aims to proactively manage, target, disrupt and prosecute identified nominals who pose a risk of impaired driving through drink and drugs across Lancashire. A current database of **315 targets** has been built utilising existing data held on Intelligence and ANPR systems. In total, to date, **225 vehicles & drivers have now been resolved through a mixture of impairment arrests and intercepts**. As part of an innovative approach to targeting impaired drivers, a new app is now available to officers and police staff where suspicions of drink driving can be submitted and following subsequent research, the suspects are raised as a target for impaired driving. **In September alone there were 69 interventions of which 20 were arrested, further leading to 2 x cases of child neglect.**
- **Op Galaxy** is an intelligence led approach to identifying cloned vehicles and the criminality relating to them. In August and September this year, there were a total of **511 cloned vehicle intercepts leading to 133 vehicles being recovered and 114 arrests** of criminals using the cloned vehicles to commit crimes using the roads of Lancashire.

Lastly, from a force perspective, **the first 8 new Volvo Roads Policing fleet have arrived in service** (ordered in August 2021); additional Volvo and Skoda vehicles are arriving regularly now at the conversion fitters.